

Project Overview

What is the Master Plan?

- Understanding current facilities, operations and trends to project the future expansion needs of the Cecil Airport.
- A living document, actively updated with development efforts.

What it's not...

- Final designs used for construction.

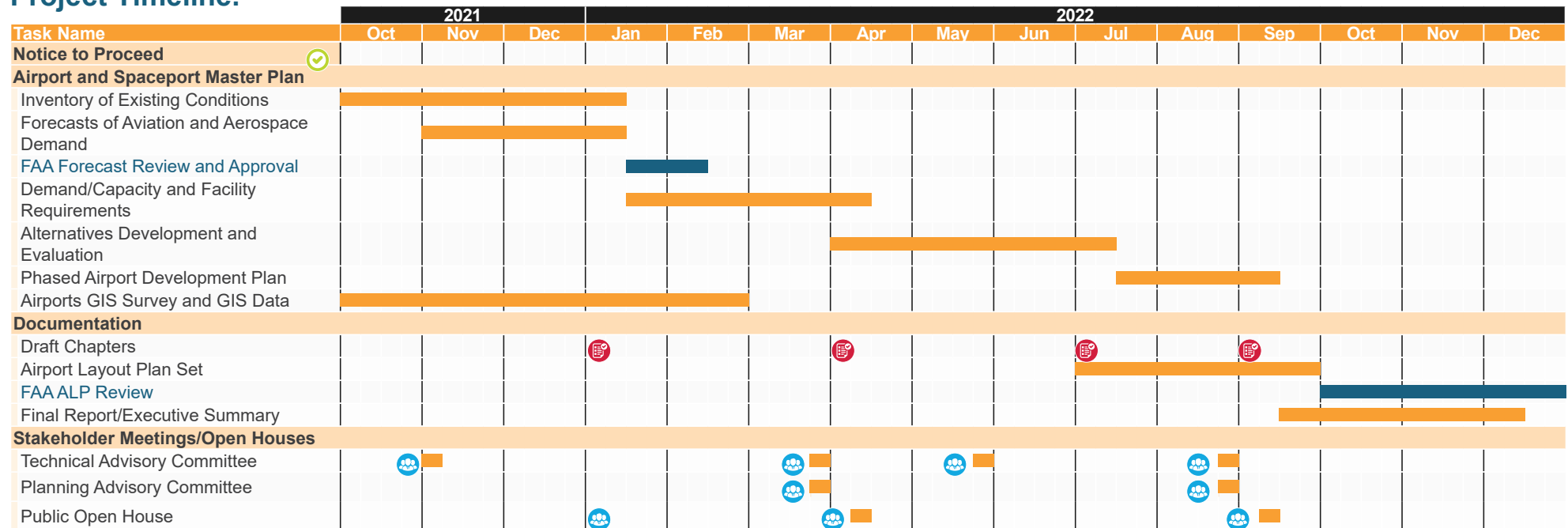
Project Funding

- Federally funded without using local taxpayer dollars.

How we get there?

- Leverage previous and ongoing studies.
- Plan for both the Airport and Spaceport.
- Develop one of the first combined Airport and Spaceport master plans.

Project Timeline:

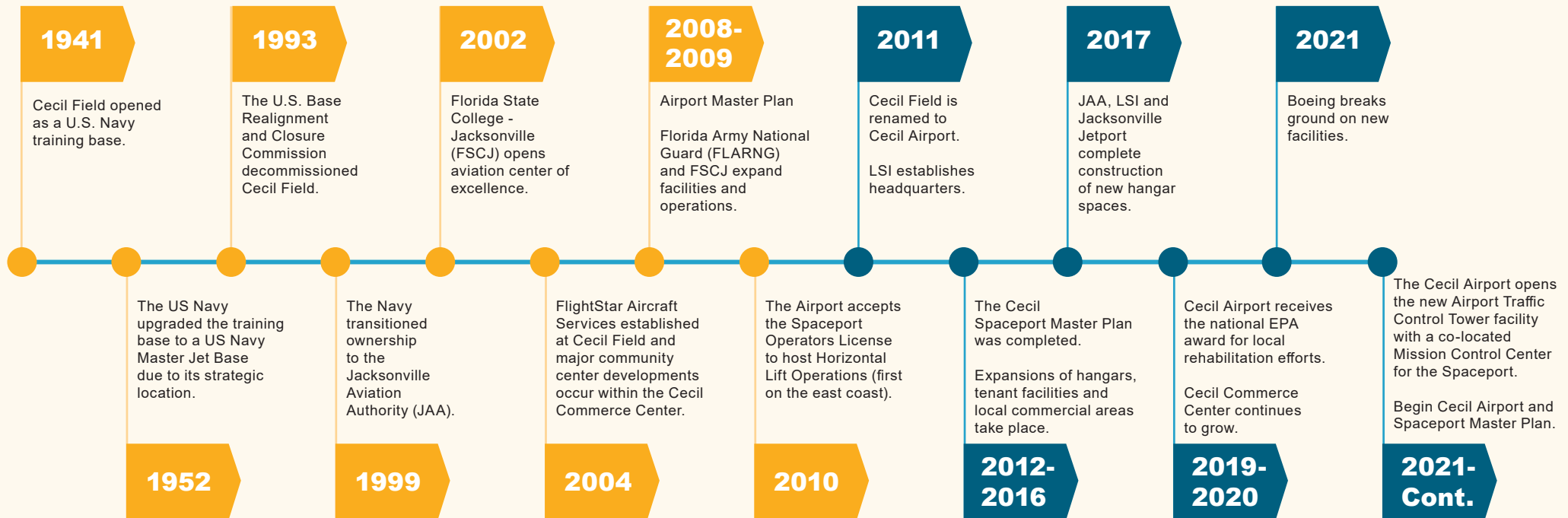


* Requires FAA approval



History

Cecil Airport continues to leverage its historic past to accommodate the explosive growth by its tenants and local aviation operations.



Notable Tenants, Users and Services



ManTech



FSCJ Florida State College
at Jacksonville



Services:

- Border security patrol and drug enforcement
- Disaster relief operations
- Search and rescue
- Maintenance, Repair, and Overhaul
- Flight training
- Jet and rocket engine testing
- Aircraft fueling



Typical Cecil Aircraft

Military

Jets and Helicopters

Jets



Helicopters



Training

Small Aircraft

Civil



Military



General Aviation/Corporate

Business Jets

Civil



General Aviation/Maintenance, Repair, and Overhaul

Various Aircraft and Helicopters

Civil



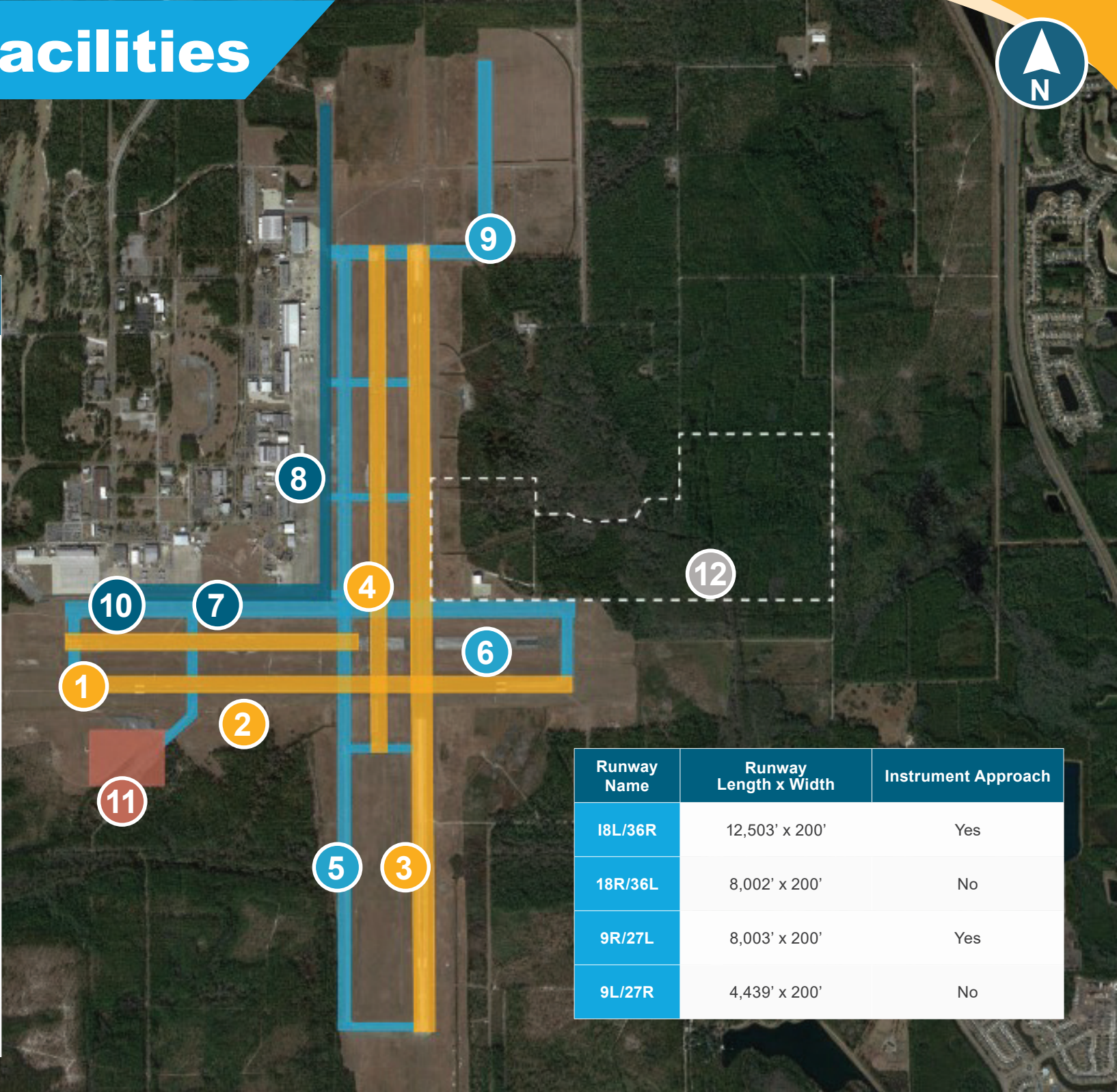
Military



Airfield Facilities



Asset	
1	Runway 9L/27R
2	Runway 9R/27L
3	Runway 18L/36R
4	Runway 18R/36L
5	Taxiway A
6	Taxiway B
7	Taxilane C
8	Taxilane D
9	Taxiway E
10	Taxiway M
11	Hot Cargo
12	Spaceport Development Area



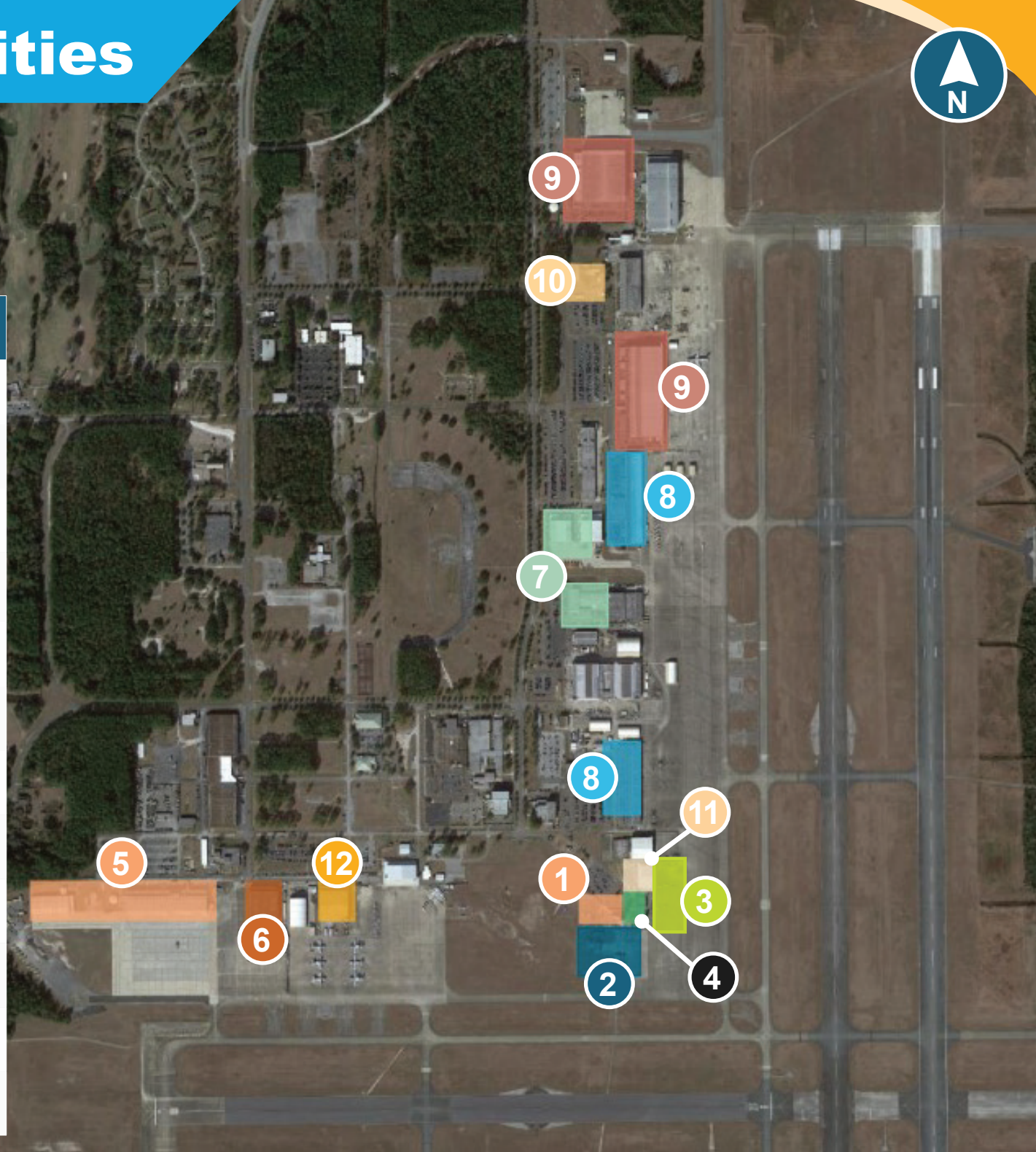
Runway Name	Runway Length x Width	Instrument Approach
18L/36R	12,503' x 200'	Yes
18R/36L	8,002' x 200'	No
9R/27L	8,003' x 200'	Yes
9L/27R	4,439' x 200'	No

Airport Facilities



Asset

- 1 Airport Traffic Control Tower and Mission Control
- 2 Airport Rescue and Firefighting
- 3 General Aviation Ramp
- 4 Fixed Base Operator/Administration
- 5 Florida Army National Guard
- 6 Coast Guard (HITRON)
- 7 LSI
- 8 Boeing
- 9 Flightstar
- 10 Wood Group Pratt & Whitney
- 11 Jacksonville JetPort
- 12 Florida State College Jacksonville



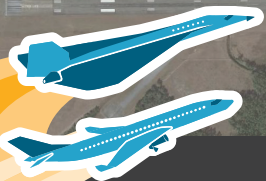
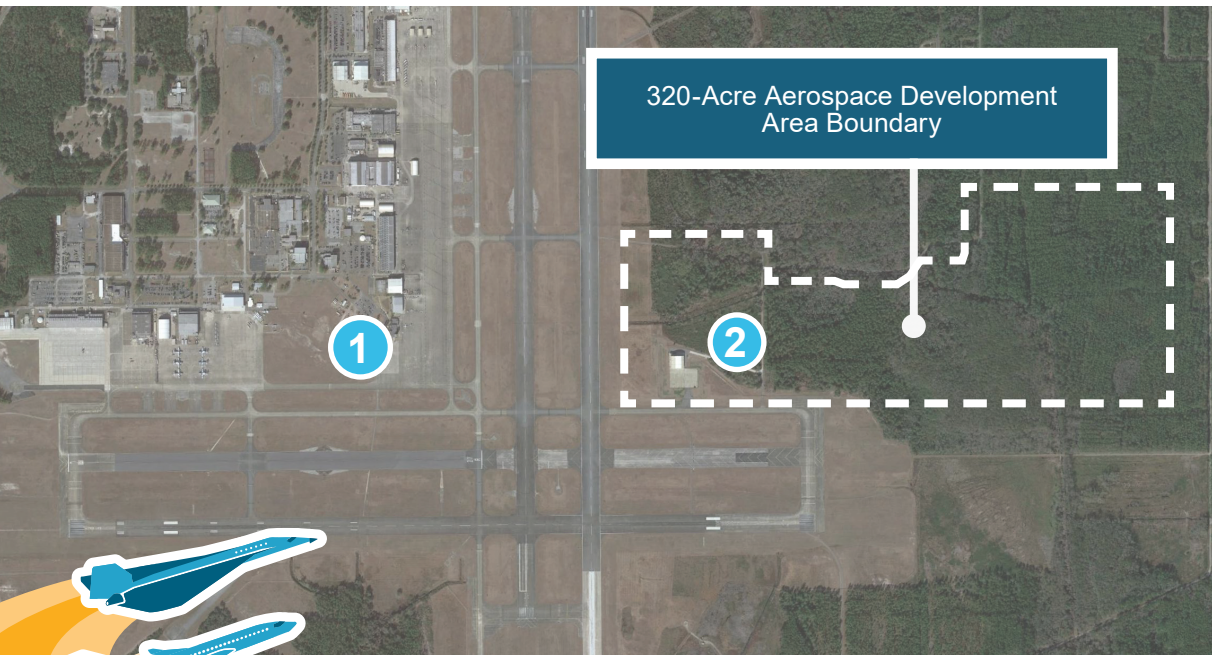
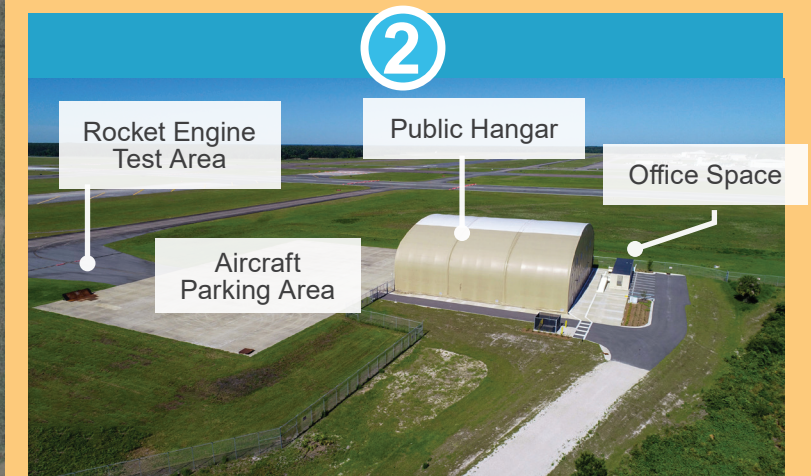
Overview of Cecil Spaceport

What is a Spaceport?

A spaceport is a licensed facility that conducts space launch operations, these operations may consist of vertical or horizontal operations.

Cecil Spaceport Features

- One of 13 licensed Spaceports in the U.S.
- Support from Space Florida, FDOT, FAA and JAA.
- Licensed horizontal launch facility



Potential Aviation Demands

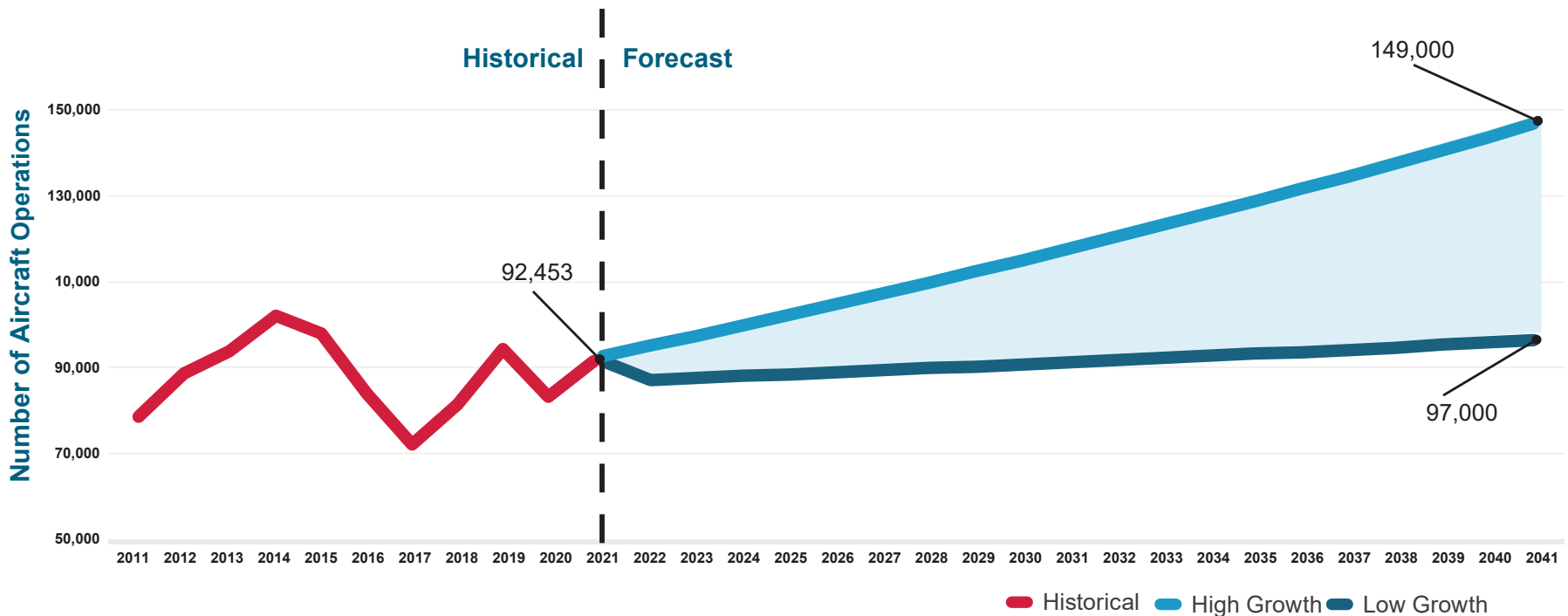
Aircraft Operations: a takeoff or landing operation

Today

- About half of the aircraft operations are military.

Forecasting for the Future

- Almost all indicators gathered from tenant interviews, operations datasets, and socioeconomic factors show projected growth in the future.



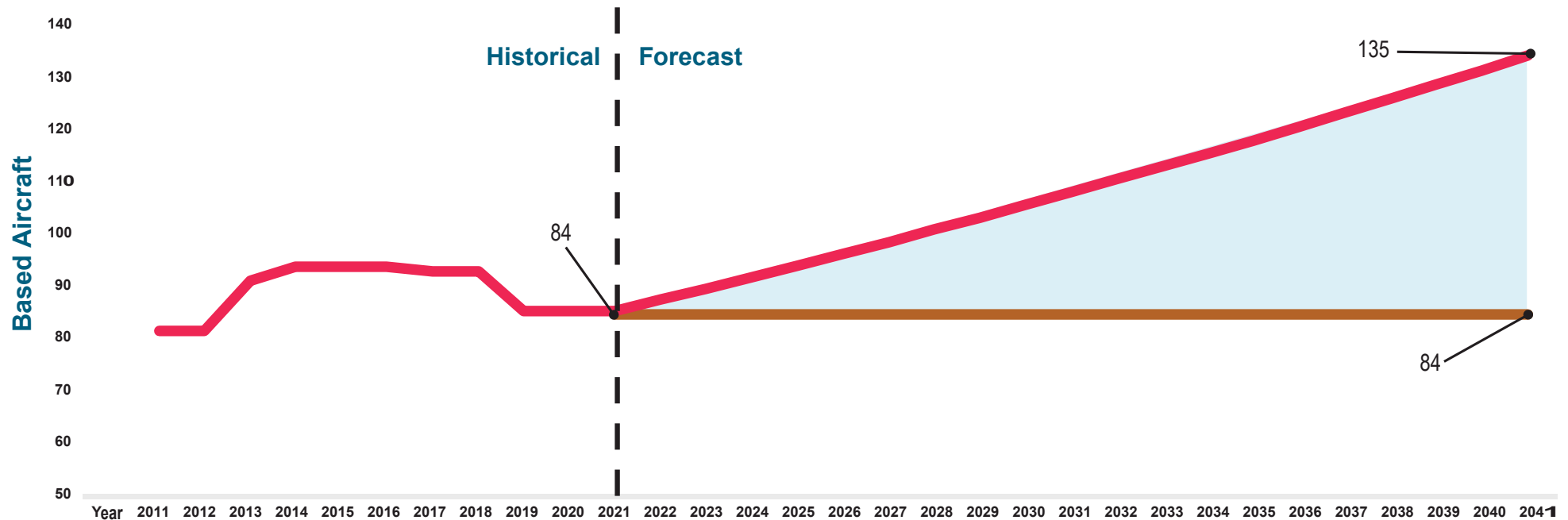
The forecasts presented within the figures are not final forecasts and are in the process of being refined. The forecasts presented are not FAA approved forecasts.



Potential Aviation Demands

Based Aircraft : An operational (ability to fly) and airworthy (proper certifications) aircraft residing at an airport for the majority of the year.

- Most based aircraft are military aircraft.
- Based aircraft demand is anticipated to be stable.



Stay Involved

Visit our website to stay up to date with project progress and upcoming public events by visiting,
www.cecilairportmasterplan.com

